



**INVEST**   
**PUNJAB**  
**INDIA**  
**BUSINESS FIRST**

AMRITSAR



**PUNJAB (INDIA)**

# PUNJAB : THE CLOSER YOU LOOK, BETTER IT GETS

WITH **1.5% OF LAND AREA**, CONTRIBUTING  
**3% TO INDIA'S GDP**

## FOOD BOWL OF INDIA

Biggest Contributor to  
Central Pool of Food  
Grains

## TRACTORS

Houses World's Biggest  
Tractor Manufacturing  
Company and produces  
about 30% of India's  
total production

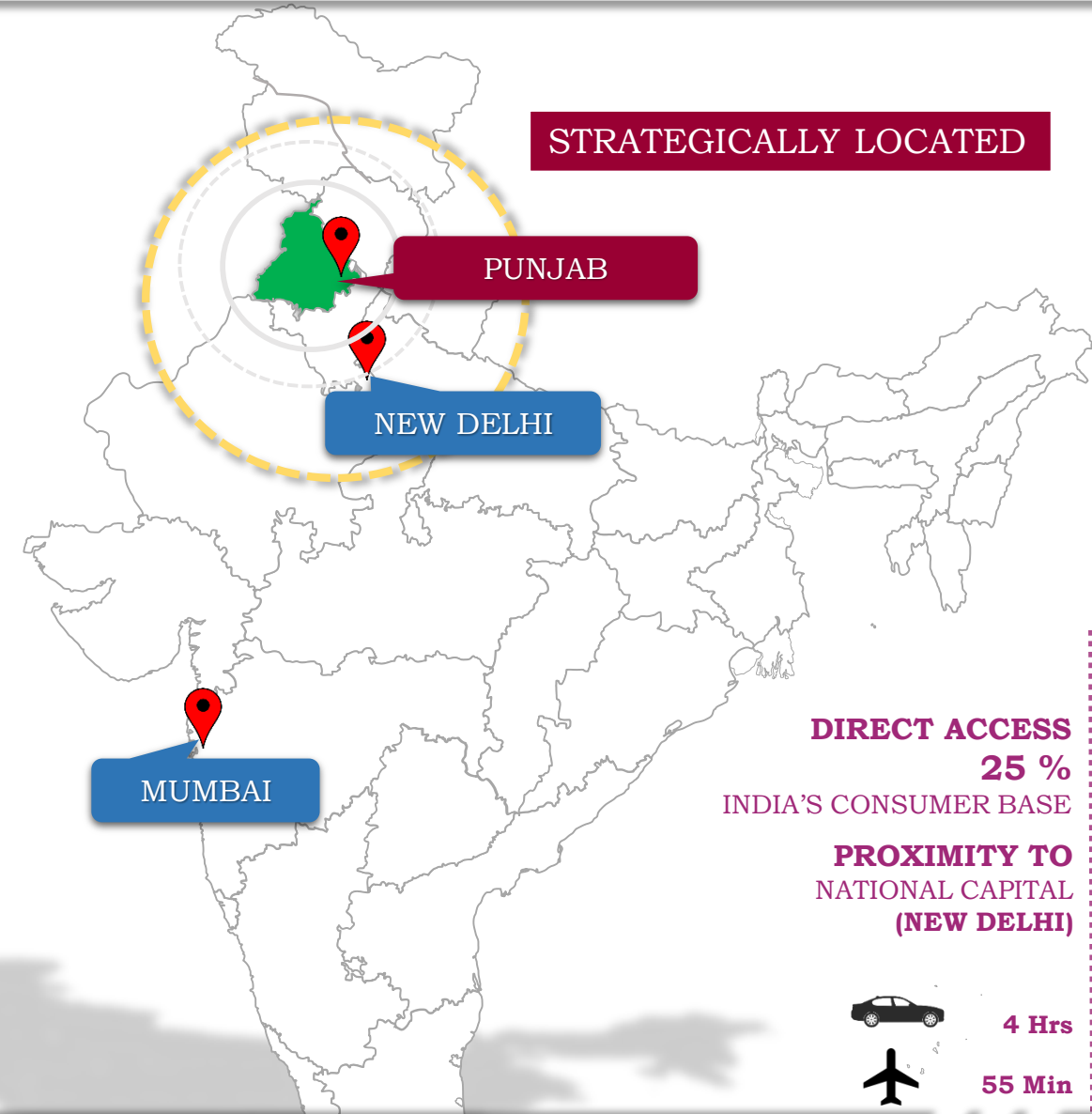
## BICYCLE

Biggest Bicycle (75%) &  
Bicycle component  
(92%) Manufacturing  
State of India

## TEXTILE

Biggest Hosiery (65%) /  
Woollen (95%)  
Manufacturing State of  
India

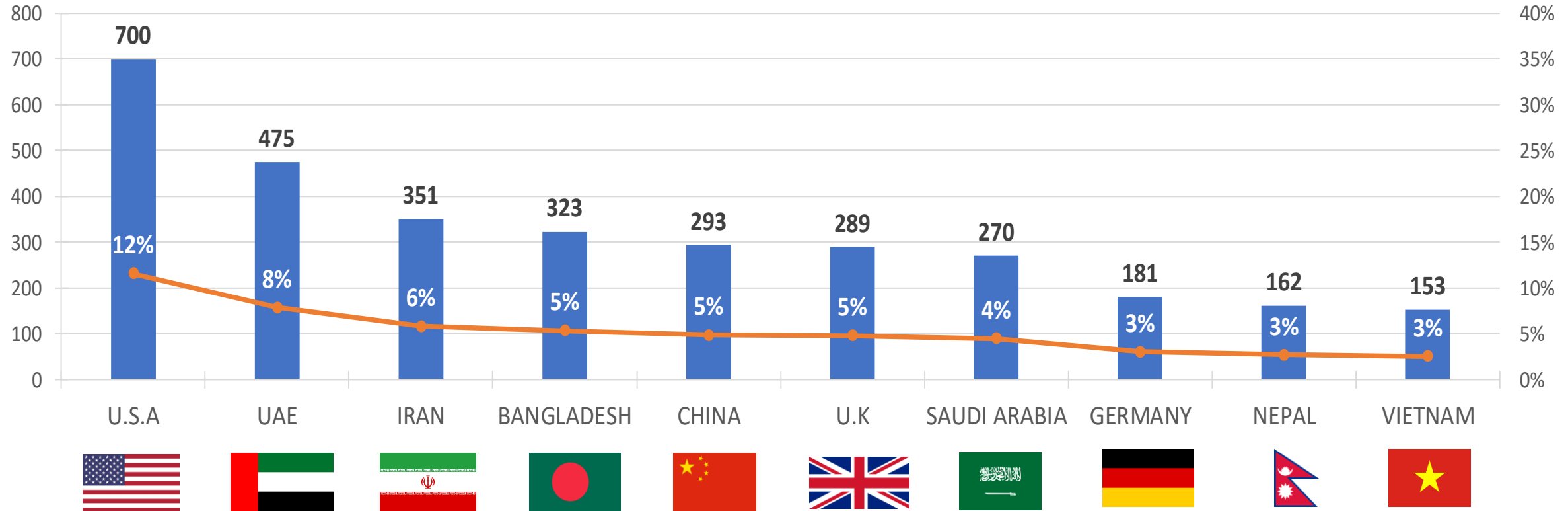
STRATEGICALLY LOCATED



## PART OF GLOBAL SUPPLY CHAIN

US\$MM

## TOP 10 EXPORT DESTINATIONS



FY 18-19

<http://www.dgcisanalytics.in>

TOP 10 EXPORT DESTINATIONS ACCOUNT FOR ~53% EXPORT

## GLOBAL IMPRESSIONS



GLOBAL IMPRESSIONS

### IBUPROFEN

WORLD'S LARGEST  
MANUFACTURER

(30% of Global Capacity)

IOL Chemicals, Ludhiana

### RUGBY WORLD CUP

JAPAN 2019



Jalandhar

### TESLA

PART OF  
SUPPLY CHAIN

Aarti Steel, Ludhiana

### FORD & DAIMLER

(ANTI VIBRATION SOLUTION)

SOLE SUPPLIER  
TO FORD (ENDEVOUR  
SUV) & DAIMLER (GLE  
SUV)

Vibracoustics, Mohali

## QUALITY OF LIFE

2<sup>nd</sup> in  
**HEALTH INDEX**  
by Government of India

- Niti Ayog 2018



3<sup>rd</sup> highest  
number of  
**FOREIGN STUDENTS**

- Survey AISHE 2018-19



In top 5 States  
in **DENSITY** of  
Colleges & Universities  
in India

- ESAG 2018 MHRD GoI



3<sup>rd</sup> in  
Governance & Political  
**STABILITY**

- NCAER in 2018



Amongst the Lowest Rate  
of **COGNIZABLE  
CRIME** in India for  
leading industrial States

- NCRB 2018





## AIR CONNECTIVITY



Tashkent (2.5 Hrs)  
Dubai (3.5 Hrs)  
Birmingham (9 Hrs)  
Doha (4 Hrs)  
Kuala Lumpur (6 Hrs)

Singapore (6 Hrs)

**Amritsar**  
**International**  
Airport

**Mohali**  
**International**  
Airport

**4 Domestic Airports**

Jalandhar, Ludhiana, Bathinda  
Pathankot

## Coming Soon

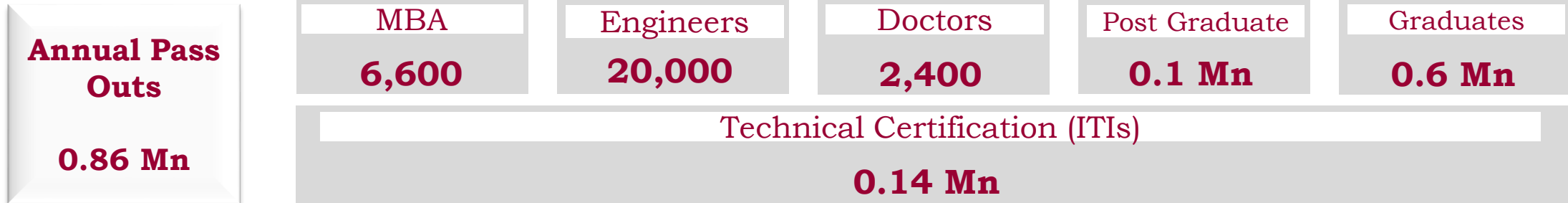
## INTERNATIONAL AIRPORT @ Ludhiana

## COMPETITIVE FACTORS OF OPERATIONS

 <b>POWER</b>	 <b>WORKFORCE</b>	 <b>LOGISTICS</b>	 <b>DIGITAL INFRASTRUCTURE</b>
<p><b>Affordable Quality Power</b></p> <ol style="list-style-type: none"> <li><b>USD 0.067 / unit</b> (variable tariff till 2022 for Industry)</li> <li><b>Power Surplus</b> State</li> <li>Low Transmission (AT&amp;C) Losses</li> </ol>	<p><b>Peaceful Relations</b></p> <ol style="list-style-type: none"> <li><b>No major strike</b> in last 3 decades</li> <li><b>Flexibility in hiring</b></li> <li><b>No domicile</b> restriction</li> <li><b>24X7 shifts</b> across gender</li> </ol>	<p><b>Ranked 2<sup>nd</sup> in Ease of Logistics</b></p> <ol style="list-style-type: none"> <li><b>1<sup>st</sup></b> in Safety/ Security of Cargo Movement</li> <li><b>5</b> Inland Container Depots &amp; <b>3</b> multi-modal logistics park</li> <li><b>2<sup>nd</sup> Highest rail density</b></li> <li>Connected to <b>dedicated freight corridors</b></li> </ol>	<p><b>Ranked 2<sup>nd</sup> in Tele-Density (%)</b></p> <ol style="list-style-type: none"> <li><b>1<sup>st</sup> in India</b> (No. of Internet subscriber/ 100 population)</li> <li>In <b>top 5 states</b> in optical fiber net connectivity</li> <li><b>4G connectivity</b> across the State</li> </ol>

USD 1 = Rs.74.5

## TALENT POOL



## Premium Institutes

Institute of **Nano Science** & Technology, Mohali

Indian School of **Business**, Mohali

Indian Institute of **Technology**, Ropar

Indian Institute of **Management**, Amritsar

Indian Institute of **Science** Education & Research, Mohali

Northern India Institute of **Fashion** Technology, Mohali

Punjab **Agriculture** University, Ludhiana

All India Institute of **Medical Sciences**, Bathinda

National **Agri-Food** Biotechnology Institute, Mohali

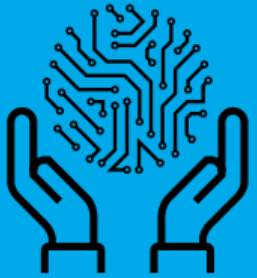
National Institute for **Pharma** Education & Research, Mohali

**Borlaug** Institute for South Asia, Ludhiana

*Many More....*

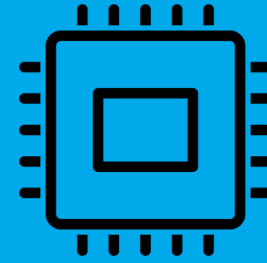


## RESEARCH & DEVELOPMENT



**ARTIFICIAL  
INTELLIGENCE &  
MACHINE LEARNING**

**IIT ROPAR  
NCCU TAIWAN**



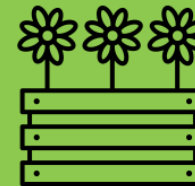
**MICROELECTRONICS  
FABRICATION  
SEMI CONDUCTOR LAB**

**MOHALI**



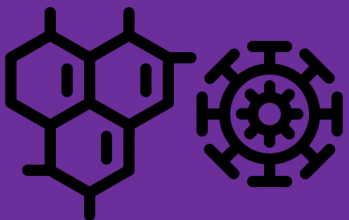
**VEGETABLE & CITRUS  
CENTRE OF EXCELLENCE  
INDO-ISRAEL**

**JALANDHAR & HOSHIARPUR**



**POTATO & FLORICULTURE  
CENTRE OF EXCELLENCE  
INDO-DUTCH**

**JALANDHAR & LUDHIANA**



**MICROBIAL  
BIOTECHNOLOGY**

**IMTech, CHD**



**GOOGLE  
CENTRE OF EXCELLENCE**

**LPU, JALANDHAR**

## BEST IN EASE OF DOING BUSINESS



**ONE STOP OFFICE**

ADVANCED SINGLE WINDOW SYSTEM

**ONE OF ITS KIND IN INDIA**

**INVESTMENT  
PROMOTION**

**FISCAL INCENTIVES**

**REGULATORY  
CLEARANCES**

**INVESTMENT  
FACILITATION**



**UNIFIED  
REGULATOR**  
(23 Departments)



**INVESTMENT  
PROMOTION AGENCY**



**DEDICATED  
RELATIONSHIP OFFICERS**



**DIGITAL APPROVALS**

## PARTNERS IN GROWTH



**PUNJAB : THE CLOSER YOU LOOK, BETTER IT GETS**

*Look Forward To A Mutually Beneficial Relationship...*



**INVEST**  
**PUNJAB**  
**INDIA**  
**BUSINESS FIRST**



**THANK YOU**

***INFO@INVESTPUNJAB.GOV.IN***

***WWW.INVESTPUNJAB.GOV.IN***

***+91 172 2776001***